

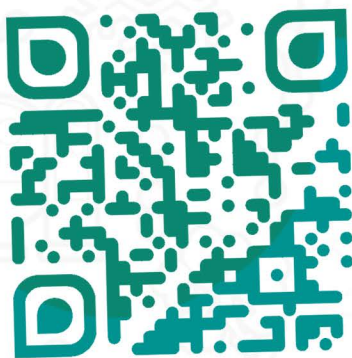
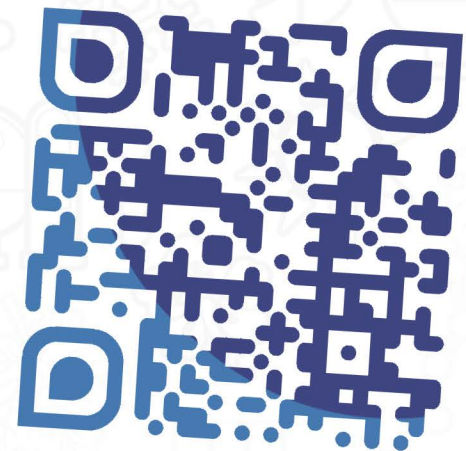


MathFinder's library of **300+ walkSTEM® and Math Walk videos** are all about seeing the magic of Science, Technology, Engineering, and Math (STEM) in real world places.

The short videos show inquiry-based snapshots of diverse places including museums, zoos, parks, playgrounds, community centers, schools & colleges, and neighborhoods. They are made for families, children (grade 4 and up), and informal educators.

We invite you to browse our video library to go on a Math Walk or a walkSTEM tour virtually!

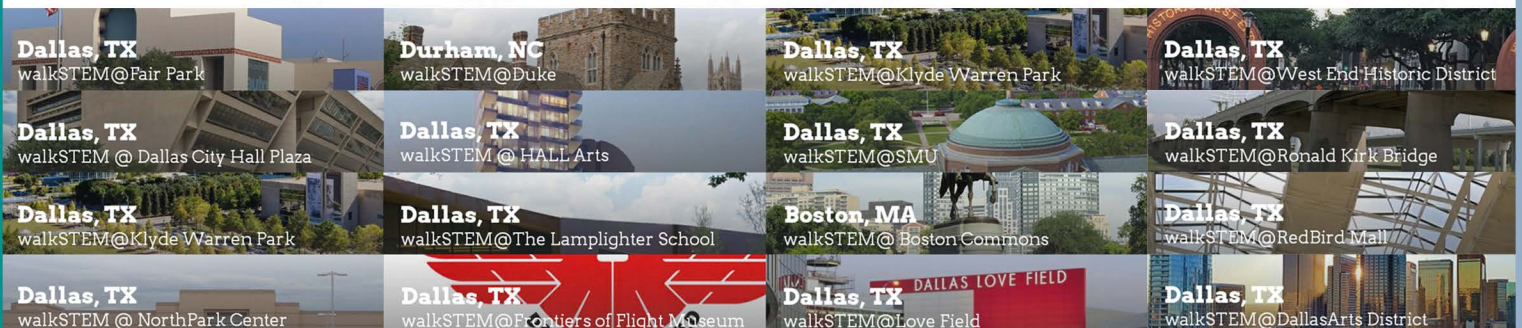
Scan here to start watching! ↘



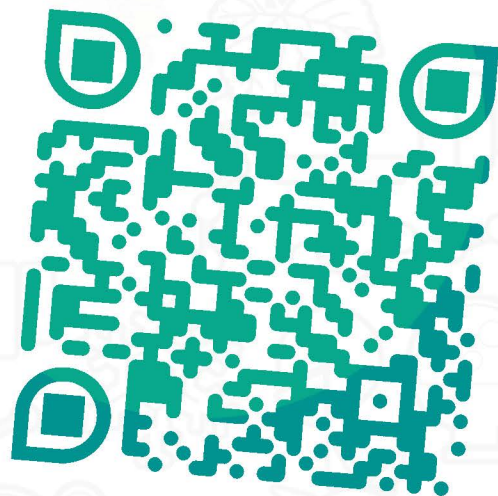
Scan here to check out the web version!

We also invite you to take an app-guided Math Walk or walkSTEM tour in the Dallas area using the **Otocast** app - available completely for **free**! Just download Otocast from your phone's **app store** or visit their web version at **app.otocast.com** and search for "talkSTEM" to get started!

You can use Otocast to take an app-guided walk, with built-in GPS directions and place-based content about all of these locations and more:



To learn how to create a Math Walk or walkSTEM tour at YOUR site, scan here



For more information and updates, scan here to sign up and join our community

And be sure to check out our partner sites for even more content!



TWELVE HILLS
NATURE CENTER



St. PHILIP'S
SCHOOL & COMMUNITY CENTER

girl scouts
of northeast texas



DALLAS ARBORETUM
AND BOTANICAL GARDEN

DMA
DALLAS MUSEUM OF ART

MathFinder is a collaboration between talkSTEM and Southern Methodist University, with support by the National Science Foundation under DRL 2115393. Any opinions, findings, and conclusions or recommendations expressed in this material are those of the author(s) and do not necessarily reflect the views of the National Science Foundation.



SMU